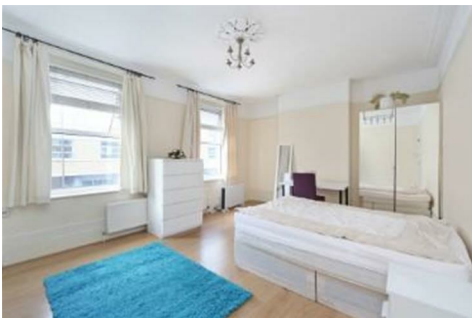




BARONS
— of London —



Greenwich High Road, London, SE10 8LF

A generous four storey, 4 bedroom period terraced house, estimating more than 2,000 sq ft with a garden. This property offers an amazing chance to shape your ideal family home.

The property is ideally situated inside the core of west Greenwich and minutes from the town centre, mainline rail & DLR connections.

The present format involves the lower level of two great spacious rooms and a WC. The ground floor has a large reception room with the kitchen to the rear, and in addition a further WC/Shower room a large conservatory and access to the back garden. Upstairs on two further levels there are three double rooms, a

Offers in the region of £865,000

